

## Zero-Phase Current Transformers

### EZ Series

**EZ Series** zero-phase molded current transformers protect the power system against leakage and earth faults. Each of these current transformers has an insulation level of 0.72 kV and requires a suitably insulated primary conductor. When the leakage current at the CT primary reaches a certain level, the CT secondary provides the necessary current signal or voltage signal – according to the type of protective relay in use – for the protection of the power system. **EZ Series** products are available in various window diameters.

### Specifications and Selection Table

- Standards: JEC, IEC or IEEE\*
- Indoor application
- For a grounded or ungrounded system (see table below)
- Insulation: Araldite® epoxy resin
- Insulation Level: 0.72 kV
- Frequency: 50/60 Hz

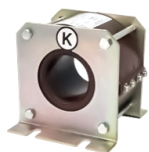


Fig. 1

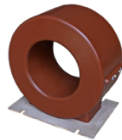


Fig. 2



Fig. 3



Fig. 4



Fig. 5



Fig. 6

| Model   | System Type       | Primary Current        | Secondary Current | Burden / Accuracy | Window Diameter (mm) | Approx. Weight (kg) | Design |
|---------|-------------------|------------------------|-------------------|-------------------|----------------------|---------------------|--------|
| EZ-60   | Ungrounded System | 200 mA                 | 1.5 mA            | 10 Ω / L Class    | 60                   | 6                   | Fig. 1 |
| EZ-90   |                   |                        |                   |                   | 90                   | 9                   |        |
| EZ-120  |                   |                        |                   |                   | 120                  | 12                  |        |
| EZ-180  |                   |                        |                   |                   | 180                  | 18                  |        |
| EZ-105  | Grounded System   | 50 A                   | 5A / 1A           | C100              | 105                  | 110                 | Fig. 2 |
| EZ-75A  |                   | 50 A                   | 5A / 1A           | C50               | 75                   | 50                  |        |
| EZ-200A |                   | 100 A                  | 5A / 1A           | 10VA / 10P10      | 200                  | 8.8                 | Fig. 3 |
| EZ-90A  |                   | 50~750 A (Multi-Ratio) | 5A / 1A           | 15VA / 10P10      | 90                   |                     | 13     |
| EZ-180A |                   |                        |                   |                   | 180                  | 13                  | Fig. 4 |
| EZ-250A |                   | 100~200 A              | 5A / 1A           | 1.5VA / 10P10     | 250                  | 9.5                 | Fig. 5 |
| EZ-350A |                   | 100~350 A              | 5A / 1A           | 1.5VA / 10P10     | 350                  | 11                  | Fig. 6 |

\* Other standards and specifications available