

Current Transformers

CR-3S Series

Insulated with Araldite® epoxy resin and designed for indoor use, these window-type current transformers are suited for the main panel or motor control panel of a medium-voltage (≤ 3.6 kV) power system. Good for protection and appropriate for measuring and monitoring instruments, these current transformers are available in both two-core and single-core models. The window-type design facilitates installation and wiring with a busbar or insulated cables, which decreases the occurrence rate of contact point failure. The *CR-3S Series* current transformers are characterized by a high degree of moisture resistance, as well as superior physical and electrical properties.

Specifications

- Standards: IEC or IEEE
- 2-core & single-core models
- Indoor usage
- Epoxy cast (Araldite® epoxy resin)
- Rated Voltage: ≤ 3.6 kV
- Frequency: 50/60 Hz
- AC/BIL: 10/40 kV
- Other specifications upon request



Figure 1

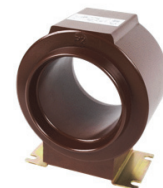


Figure 2

Selection Table*

* Other standards and specifications available.

Model	Primary Current	Secondary Current		Burden / Accuracy	Approx. Weight (kg)	Number of Cores	Window Diameter (mm)	Style
		Core 1	Core 2					
CR-3S-30	300~500A	5A / 1A	-	10VA / 5P20 or 30(15)VA / 1.0(0.5)	7	1 Core	30	Figure 1
CR-3S-60	500~800A				6		60	
CR-3S-70	600~1200A				6		70	
CR-3S-90	800~1200A				7		90	
CR-3S-45A	300~600A	5A / 1A	5A / 1A	15VA / 5P20 + 30(15)VA / 1.0(0.5)	19	2 Cores	45	Figure 2
CR-3S-60A	500~800A				17		60	
CR-3S-75A	600~1200A				15		75	
CR-3S-130A	1500~3000A	5A / 1A	5A / 1A	15VA / 5P10 + 30(15)VA / 0.5(0.2)	12	2 Cores	130	Figure 2
CR-3S-90B	600~1200A	5A / 1A	5A / 1A	30VA / 5P20 + 30(15)VA / 0.5(0.2)	35		90	
CR-3S-140B	1500~4000A				23		140	