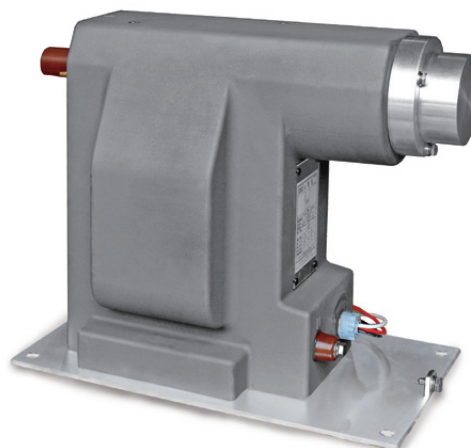


CONDUCTIVE SHIELD VOLTAGE TRANSFORMER

for 24 kV 4-Way Switchgear

Also as Circuit Breaker Operation Power Source

EPF-20FB



Introduction

Specifically designed for 24 kV 4-way switchgear, this medium-voltage single-pole voltage transformer features a high-voltage elbow-type connector on the primary side and a built-in high-voltage fuse for protection. Since the exterior of the voltage transformer is coated with a metal conductive mixture for shielding, the necessary distance between the VT and the panels (or other equipment) is reduced.

Waterproof treatment can be requested for the secondary of the VT. This optional waterproof treatment will allow the VT to continue functioning even if immersed in water below the level of its primary-fuse housing (such as in the case of water accumulation on the street).

Insulated with Araldite® epoxy, this MV voltage transformer is characterized by excellent water resistance, superior electrical performance, and great reliability, while being lightweight and compact.

Features

- According to IEC or IEEE Standard.
- Metal conductive coating replaces traditional metal-box for shielding.
- Compact, space-saving design.
- Waterproof treatment can be requested for the secondary. This will allow the VT to continue functioning even if immersed in water below the level of its primary-fuse housing.
- Built-in primary fuse can be easily replaced.

Suggested Applications

- Outdoor or indoor electrical distribution panel board.
- Especially ideal for low-lying and frequently flooded distribution boxes, such as 4-Way switchgear.

Specifications

- Standard: IEC (IEEE available)
- Resin-cast (Araldite® epoxy resin)
- Metal conductive coating for shielding
- Primary Voltage Rating: 13200 V (24/ $\sqrt{3}$ kV)
- Secondary Voltage Rating (Dual-Voltage): 220 / 110 V
- Rated Insulation Level: 24 kV
- Frequency: 50 or 60 Hz
- AC / BIL: 50 / 125 KV
- Burden / Accuracy: 600VA / 3.0CL
- Approx. Weight: 43 kg
- Built-in fuse on primary circuit
- Other standards and specifications available



CHALLENGE INDUSTRIAL CO., LTD.

1F, No. 46, Ln. 80, Sec. 3, Nangang Rd.,
Taipei City 115, Taiwan (R.O.C.)
T: 886-2-2788-3368 ext. 2318