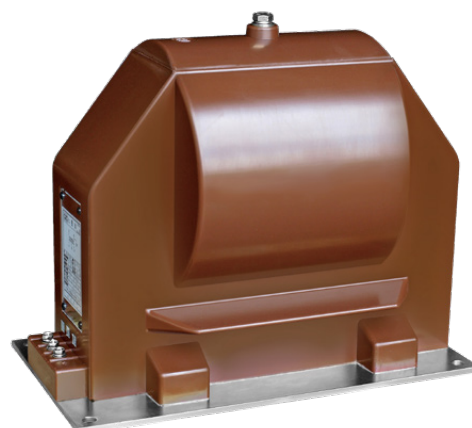


EPOXY-CAST VOLTAGE TRANSFORMER

for SF₆ Gas-Insulated MOF Panel



EPF-20SH

Introduction

Intended for power companies, the EPF-20SH single-phase voltage transformer, or potential transformer, is designed to be mounted inside the SF₆ gas-insulated MOF (Metering Outfit) panel of a 25.5 kV (max.) power system. With an added tap in the secondary winding, this VT (PT) can offer two voltage ratios (120/60 : 1) and allows easy switching between the two, while maintaining the accuracy and burden rating of 0.3Y at each voltage ratio. Insulated with Araldite® epoxy resin, this indoor voltage transformer offers excellent electrical performance and high reliability.

Specifications

Standard	IEEE
System Voltage	≤ 25.5 kV
Frequency	50 or 60 Hz
Nominal Voltage Ratio	120/60 : 1 (two voltage ratios)

Selection Table

Model	EPF-20SH
Primary Voltage	23.90 / √3 kV & 11.95 / √3 kV
Secondary Voltage	115 V
Accuracy / Burden	0.3Y / 0.3Y
AC / BIL	50 / 125 kV
Approx. Weight	57 kg

Note: Other standards and specifications available.

CHALLENGE INDUSTRIAL CO., LTD.

1F, No. 46, Ln. 80, Sec. 3, Nangang Rd.,
Taipei City 115, Taiwan (R.O.C.)
T: 886-2-2788-3368 ext. 2318