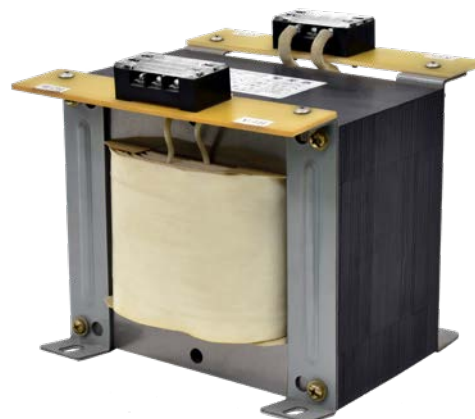


LOW-VOLTAGE DRY-TYPE CONTROL TRANSFORMERS



DSH Series

Introduction

DSH Series low-voltage control transformers are compact, economical, and suitable for use in machine tools or industrial equipment.

Specifications

- Standard: IEC or IEEE
- Phase: Single-Phase
- Frequency: 50 or 60 Hz
- AC / BIL: 3 / - kV
- Primary Voltage: 220 (240) V, 440 (480) V, or 380 V
- Secondary Voltage: 110 (120) V or 220 (240) V
- Capacity: 1 - 7.5 kVA
- Enclosures available (optional).
- Terminal covers included for protection against electrical shocks.
- Made with wires of high conductivity and silicon steel sheets with high magnetic permeability.
- Compact with excellent heat dissipation. Easy to install and maintain.
- Suitable for use in low-voltage distribution or control panels, or as an auxiliary power source for machine tools and industrial equipment.
- High efficiency. Low noise. H-Class insulation.
- Other standards and specifications upon request.

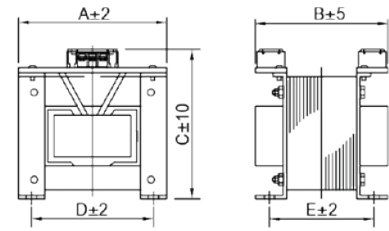
Selection Table

Capacity (kVA)	Standard Type (IP00) Dimensions 【Please refer to Drawings.】 (mm)					Approx. Weight (kg)	Drawings
	A	B	C	D	E		
1	162	136	162	135	96	10	A
2	190	180	190	160	120	19	
3	190	210	190	160	150	23	
5	228	190	240	150	135	38	
7.5	228	210	240	150	140	45	B

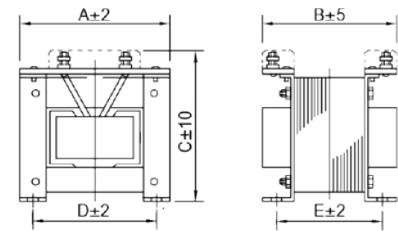
Capacity (kVA)	Enclosed Type (IP20) Dimensions 【Please refer to Drawings.】 (mm)					Approx. Weight (kg)	Drawings
	A	B	C	D	E		
1	200	200	205	-	-	15	C
2	250	250	305	-	-	25	
3	250	250	305	-	-	30	
5	300	300	400	250	250	45	D
7.5	300	300	400	250	250	52	

Note: Dimensions are for reference purposes only.
Please contact us for final specifications.

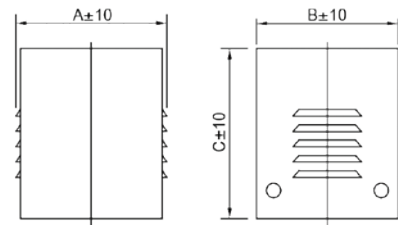
Drawings



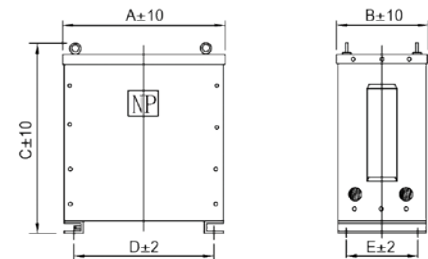
Drawing A (Standard Type: 1, 2, 3 & 5 kVA)



Drawing B (Standard Type: 7.5 kVA)



Drawing C (Enclosed Type: 1, 2 & 3 kVA)



Drawing D (Enclosed Type: 5 & 7.5 kVA)



CHALLENGE INDUSTRIAL CO., LTD.

1F, No. 46, Ln. 80, Sec. 3, Nangang Rd.,
Taipei City 115, Taiwan (R.O.C.)
T: 886-2-2788-3368 ext. 2318