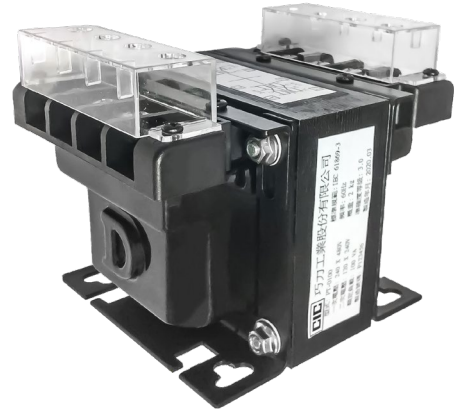


Potential Transformers

CPT Series

Introduction

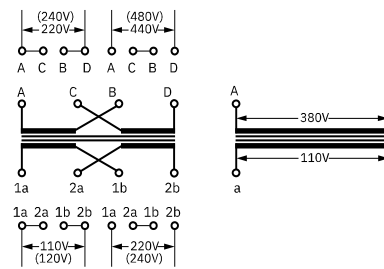
CIC's CPT Series low-voltage single-phase potential transformers are resin-cast for Class-A insulation. They are compact, economical, and easy to install. These potential transformers can be used in conjunction with measuring or monitoring instruments, or as an auxiliary power source in the main panel or motor control panel.



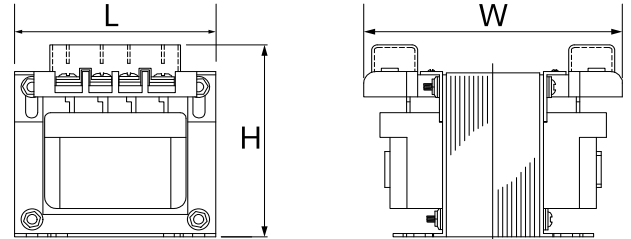
Specifications

- Standard: IEC or IEEE
- Phase: Single-Phase
- Frequency: 50 or 60 Hz
- AC/BIL: 3/- kV
- Resin-cast for Class-A insulation.
- Conformance with UL safety requirements and regulations.
- Terminal covers included for protection against electrical shocks.
- Highly resistant to moisture, heat, and dust – appropriate for use at highly polluted locations.
- Both the primary and secondary windings can be connected either in series or parallel to provide or produce different voltages.
- Other standards and specifications upon request.

Wiring Diagrams



Drawings



Selection Table

Model	Primary Voltage (V)	Secondary Voltage (V)	Burden (VA)				Dimensions L x W x H (mm)	Approx. Weight (kg)
			PT *			CTR **		
			Accuracy					
			0.5	1.0	3.0	-		
PT-0050	220 (240) or 440 (480) or 380	110 (120) or 220 (240)	-	-	-	50	66 x 103 x 77	1.3
PT-0075			-	10	75	75	66 x 117 x 77	1.8
PT-0100			-	25	100	100	72 x 113 x 87	2.0
PT-0150			25	50	150	150	81 x 124 x 97	3.2
PT-0250			50	100	250	250	98 x 119 x 115	4.1
PT-0350			100	200	350	350	98 x 142 x 115	5.6
PT-0500			150	300	400	500	112 x 145 x 134	8.3
PT-0600			200	400	500	600	112 x 157 x 134	9.3
PT-0750			300	500	750	750	112 x 172 x 134	10.6

* PT: Potential Transformer

** CTR: Control Transformer