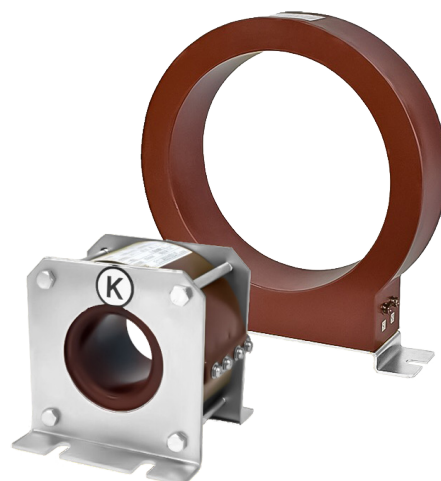

ZERO-PHASE CURRENT TRANSFORMERS

for Ground-Fault Protection



EZ Series

Introduction

EZ Series zero-phase molded current transformers protect the power system against leakage and earth faults. Each of these current transformers has an insulation level of 0.72 kV and requires a suitably insulated primary conductor. When the leakage current at the CT primary reaches a certain level, the CT secondary provides the necessary current signal or voltage signal – according to the type of protective relay in use – for the protection of the power system. EZ Series products are available in various window diameters.

Specifications

- Standard: JEC, IEC or IEEE
- Indoor application
- For a grounded or ungrounded system (see table below)
- Insulation: Araldite® epoxy resin
- Insulation Level: 0.72 kV
- Frequency: 50 or 60 Hz

Selection Table

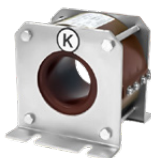


Fig. 1



Fig. 2



Fig. 3



Fig. 4



Fig. 5



Fig. 6

Model	System Type	Primary Current	Secondary Current	Burden / Accuracy	Window Diameter (mm)	Approx. Weight (kg)	Design
EZ-60	Ungrounded System	200 mA	1.5 mA	10 Ω / L Class	60	6	Fig. 1
EZ-90					90	9	
EZ-120					120	12	
EZ-180					180	18	
EZ-105		50 A	5 A / 1 A	C 100	105	110	
EZ-75A	Grounded System	50 A	5 A / 1 A	C 50	75	50	Fig. 2
EZ-200A		100 A	5 A / 1 A	10 VA / 10P10	200		
EZ-90A		50 ~ 750 A (Multi-Ratio)	5 A / 1 A	15 VA / 10P10	90	8.8	Fig. 3
EZ-180A					180	13	Fig. 4
EZ-250A		100 ~ 200 A	5 A / 1 A	1.5 VA / 10P10	250	9.5	Fig. 5
EZ-350A		100 ~ 350 A	5 A / 1 A	1.5 VA / 10P10	350	11	Fig. 6

Note: Other standards and specifications available.



CHALLENGE INDUSTRIAL CO., LTD.

1F, No. 46, Ln. 80, Sec. 3, Nangang Rd.,
Taipei City 115, Taiwan (R.O.C.)
T: 886-2-2788-3368 ext. 2318