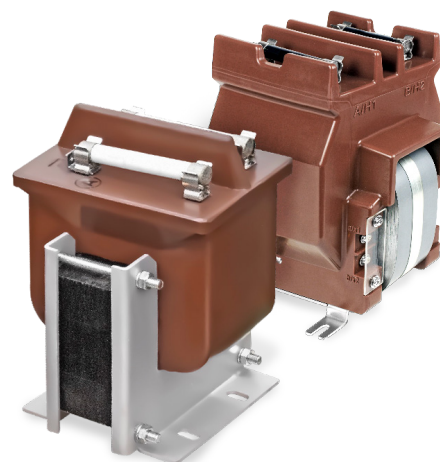


# COIL MOLDED SINGLE-PHASE VOLTAGE TRANSFORMERS FOR INDOOR USE

## EP-3SF/6SF Series

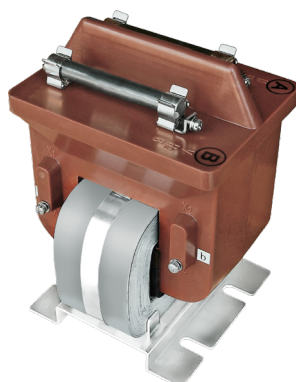


### Introduction

Intended for power systems of 7.2 kV or below, these single-phase coil molded voltage transformers are compact and economical. Model EP-3SF2 features a laminated core and is fixed by two metal frames; cut-core models EP-3SF5 and EP-6SFK are fitted on a metal base. All of the models come with two fuses on the primary side and are insulated with Araldite® epoxy resin. The EP-3SF/6SF Series is characterized by high moisture resistance and excellent electrical properties. In addition, the EP-6SFK model can be used as an auxiliary power source for circuit breaker operation (see Selection Table).



EP-3SF2



EP-3SF5



EP-6SFK

## Selection Table\*

Model	Standard	Phase (Φ)	Frequency (Hz)	Primary Voltage (V)	Secondary Voltage (V)	Burden / Accuracy	AC / BIL (kV)	Primary-Side Fuses	Approx. Weight (kg)
EP-3SF2	IEC	1	50 or 60	3600 3450 3300	120 115 110	100 VA / 1.0 CL 200 VA / 3.0 CL	20 / 60	2	10
EP-3SF5	IEC	1	50 or 60	7200 6600	120 115 110	200 VA / 3.0 CL 100 VA / 1.0 CL	20 / 60	2	15
				4200 3600 3300		200 VA / 1.0 CL 500 VA / 3.0 CL			
EP-6SFK	IEC	1	50 or 60	7200 6600 4200	120 115 110	500 VA / 1.0 ** 1000 VA / - ** 2000 VA / - (Class-B)	20 / 60	2	28
				3600 3300			10 / 40		

\*Other standards and specifications available.

\*\*If burden rating  $\geq 1000\text{VA}$ , the VT can be used as an auxiliary power source for circuit breaker operation (accuracy N/A).



### CHALLENGE INDUSTRIAL CO., LTD.

1F, No. 46, Ln. 80, Sec. 3, Nangang Rd.,  
Taipei City 115, Taiwan (R.O.C.)  
T: 886-2-2788-3368 ext. 2318