

# 10/20kV Potential Transformers

**EPF-10B/20SE/20SI**

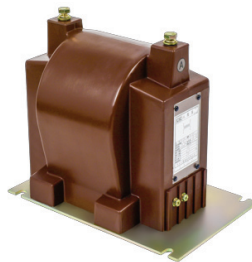
EPF-10B, EPF-20SE, and EPF-20SI potential transformers have been widely used for 12~24 kV power systems. Insulated with Araldite® epoxy and characterized by superior moisture resistance and excellent electrical properties, these potential transformers have met with a high level of customer satisfaction in numerous countries.

EPF-10B, EPF-20SE, and EPF-20SI potential transformers are known for their durability. In particular, Model EPF-20SE has, as requested by customers, undergone stringent environmental testing (Thermal Cycling Testing), in which the potential transformer withstood 20 temperature cycles (from -40 to +65°C), lasting approximately 240 hours.

All three models can be customized to meet the requirements of different standards and specifications.

## Specifications

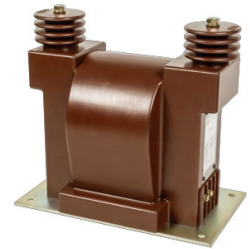
- Cast in Araldite® epoxy
- Indoor usage
- Standard: IEC or IEEE\*
- System Voltage: 12~24 kV
- Frequency: 50/60 Hz



EPF-10B



EPF-20SE



EPF-20SI

## Selection Table

Model	Specifications			Burden / Accuracy	AC / BIL (kV)	Other Info.	
	Primary Voltage (kV)	Secondary Voltage (V)	Tertiary Voltage (V)			Approx. Weight (kg)	Thermal Burden (VA)
EPF-10B	12	120	-	150VA/1.0 or 30VA/0.5 or 15VA/0.2	28/75	27	500
EPF-20SE	24	120	-	500VA/1.0 or 200VA/0.5	50/125	53	2000
	24/√3	120/√3	120/√3	500VA/1.0+250VA/3P (24kV) 200VA/1.0+200VA/3P (12kV)			1200 + 500
EPF-20SI	24	120	-	500VA/3.0 or 200VA/1.0 or 25VA/0.3	50/125	27	-

\*Other standards and specifications available.