

通膨促銷專案
Limited Offer
比壓器 · 變壓器
PT & Transformers

Low-Voltage Potential Transformers

Model	Phases / Frequency	Specifications	Photo
RP-1SN	1Φ / 60Hz	50VA/1.0-380/√3V-110/√3V	
		50VA/1.0-380V-120V	
		50VA/1.0-380/√3V-120/√3V	
		50VA/1.0-480V-110V	
		50VA/1.0-480V-120V	
		50VA/1.0-P:480V-S:120/110V	
		100VA/3.0-380V-110V	
		100VA/3.0-380V-120V	
		100VA/3.0-380V-220V	
		100VA/3.0-460V-110V	
		100VA/3.0-480V-110V	
		100VA/3.0-480V-120V	
		100VA/3.0-480V-220V Isolated	
RP3-1SN	3Φ / 60Hz	50VA/3.0-380V-220V-Δ-Δ	
RP-1S3	1Φ60Hz	100VA/1.0-120V-120V	
		100VA/1.0-200V-110V	
		100VA/1.0-380/√3V-110/√3V	
		100VA/1.0-380V-120V	
		100VA/1.0-380/√3V-120/√3V	
		100VA/1.0-380V-220V	
		100VA/1.0-480V-110V	
		200VA/3.0-220V-110V	
		200VA/3.0-480V-110V	
		200VA/3.0-480V-120V	
		200VA/3.0-480V-220V	
		RP3-1S3	
		3*200VA/3.0-380V-110V-Δ-Δ	
RP-1S5	1Φ60Hz 1Φ60Hz	150VA/1.0-480V-120V	
		200VA/1.0-380V-110V	
		200VA/1.0-380/√3V-110/√3V	
		200VA/1.0-380V-120V	
		200VA/1.0-380/√3V-120/√3V	
		200VA/1.0-380V-220V	
		200VA/1.0-400V-100V	
		300VA/1.0-220V-110V	
		300VA/3.0-220V-110V	
		300VA/3.0-230V-115V	
		300VA/3.0-380V-110V	
		300VA/3.0-440V-220V	
		300VA/3.0-460V-115V	
		300VA/3.0-480V-110V	
		500VA/3.0-230V-115V	
		500VA/3.0-380V-220V	
		500VA/3.0-440V-110V	




Figure 1

[Unit Price](#)

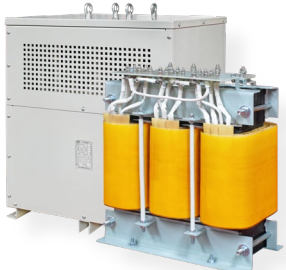
[Dimensions](#)

RP-1S5	1Φ60Hz	500VA/3.0-460V-110V	 <p>Figure 1</p> <p>Unit Price Dimensions</p>	
		500VA/3.0-460V-115V		
		500VA/3.0-480V-110V		
		500VA/3.0-480V-120V		
		750VA/3.0-230V-115V		
		1000VA/3.0-208V-220V		
		1000VA/3.0-230V-115V		
		1000VA/3.0-240V-120V		
		1000VA/3.0-380/√3V-110/√3V		
		1000VA/3.0-460V-110V		
		1000VA/3.0-480V-120V		
RP-1S7	1Φ60Hz	500VA/1.0-380/√3V-110/√3V 2000VA/3.0-480V-120V	 <p>Figure 2</p> <p>Unit Price Dimensions</p>	
ET1-1S	1Φ60Hz	380V-110V IP00 Cast Resin Class F Subtractive Polarity		
S-11	1Φ / 60Hz	1500VA/3.0 P:480/120V-S:220/110V Terminal covers included P & S taps		 <p>Figure 3</p> <p>Unit Price Dimensions</p>

Medium-Voltage Potential Transformers

Model	Phases / Frequency	Specifications	Photo
EPF-20SI	1 Φ / 60Hz	200VA/1.0-24KV-120V	 <p>Figure 4</p> <p>Unit Price Dimensions</p>

Low-Voltage Dry-Type Transformers

Model	Phases / Frequency	Specifications	Photo
DTH	3 Φ / 60Hz	30 kVA 220V-190Y/110V-H Class- Δ -Y	 <p>Figure 5</p> <p>Unit Price Dimensions</p>
		200 kVA 480V \pm 2*2.5%-400Y/231V Class H Δ -Y (Note: 1. Anti-harmonic 2. Includes round-pointer thermometer 3. Without PT100 terminal)	

Non-Ventilated Resin-Encapsulated Transformers


Model	Phases / Frequency	Specifications	Photo
+ET	1 Φ / 60Hz	2 kVA 220-110V-Subtractive Polarity-Mounting on Floor	
		3 kVA 220V-110V-Isolated- Subtractive Polarity-No. 94	
		15 kVA 380V-190/110V-(Center Tap)-Mounting on Wall	
ET	3 Φ / 60Hz	3 kVA 380V \pm 2*2.5%-190Y/110V- No. 94- Mounting on Floor- Δ -Y	
		5 kVA 380V \pm 2*2.5%-190Y/110V- No. 94- Mounting on Floor- Δ -Y	
		5 kVA 380V \pm 2*2.5%-190Y/110V- No. 94- Mounting on Floor- Δ -Y	
+ET	3 Φ / 60Hz	7.5 kVA 380V \pm 2*2.5%-190Y/110V- No. 94- Mounting on Floor- Δ -Y	
		7.5 kVA 380V \pm 2*2.5%-190Y/110V- No. 94- Mounting on Floor- Δ -Y	
		10 kVA 380V \pm 2*2.5%-190Y/110V- No. 94- Mounting on Floor- Δ -Y	
		10 kVA 380V \pm 2*2.5%-190Y/110V- No. 94- Mounting on Floor- Δ -Y	
ET	3 Φ / 60Hz	20 kVA 380V-190Y/110V- Horizontal Suspension- Δ -Y	
+ET	3 Φ / 60Hz	20 kVA 380V \pm 2*2.5%-190Y/110V- No. 94- Mounting on Floor- Δ -Y	
		20 kVA 380V \pm 2*2.5%-190Y/110V- No. 94- Mounting on Floor- Δ -Y	
		25 kVA 380V \pm 2*2.5%-190Y/110V- No. 94- Mounting on Floor- Δ -Y	

Figure 6

[Unit Price](#)

[Dimensions](#)

Note: "ET" denotes models with copper windings; "+ET" refers to those with aluminum windings.

+ET	3Φ / 60Hz	25 kVA 380V±2*2.5%-190Y/110V- No. 94- Mounting on Floor-△ -Y
		30 kVA 380V±2*2.5%-190Y/110V- No. 94- Mounting on Floor-△ -Y
		30 kVA 380V±2*2.5%-190Y/110V- No. 94- Mounting on Floor-△ -Y
		30 kVA Top Opening-380V±2*2.5%- 190Y/110V-No. 94- Mounting on Floor-△-Y
ET	3Φ / 60Hz	37.5 kVA Top Opening- 380±2*2.5%V- 190Y/110V-H Class-Mounting on Floor
+ET	3Φ / 60Hz	37.5 kVA Top Opening-380V±2*2.5%- 190Y/110V-No. 94- Mounting on Floor-△-Y
ET	3Φ / 60Hz	50 kVA Top Opening-380±2*2.5%V- 190Y/110V- H Class- Mounting on Floor
+ET	3Φ / 60Hz	50 kVA Top Opening-380V±2*2.5%- 190Y/110V-No. 94- Mounting on Floor-△-Y
ET	3Φ / 60Hz	50 kVA Top Opening-380±2*2.5%V- 190Y/110V-No. 94- Mounting on Floor-△- Y K4, Special Outlet Hole 4-ø53
		100 kVA 380V-190Y/110V-△- Y -Top Opening



Figure 6

[Unit Price](#)

[Dimensions](#)

Note: “ET” denotes models with copper windings; “+ET” refers to those with aluminum windings.

Low-Voltage Potential Transformers

Model	Phases / Frequency	Specifications	Unit Price (NT\$)	Note
RP-1SN	1Φ / 60Hz	50VA/1.0-380/√3V-110/√3V	960	Figure 1 Photo Dimensions
		50VA/1.0-380V-120V	960	
		50VA/1.0-380/√3V-120/√3V	960	
		50VA/1.0-480V-110V	960	
		50VA/1.0-480V-120V	960	
		50VA/1.0-P:480V-S:120/110V	960	
		100VA/3.0-380V-110V	960	
		100VA/3.0-380V-120V	960	
		100VA/3.0-380V-220V	960	
		100VA/3.0-460V-110V	960	
		100VA/3.0-480V-110V	960	
		100VA/3.0-480V-120V	960	
		100VA/3.0-480V-220V Isolated	1,040	
RP3-1SN	3Φ / 60Hz	50VA/3.0-380V-220V-△-△	2,800	
RP-1S3	1Φ60Hz	100VA/1.0-120V-120V	1,200	Figure 1 Photo
		100VA/1.0-200V-110V	1,200	
		100VA/1.0-380/√3V-110/√3V	1,200	
		100VA/1.0-380V-120V	1,200	
		100VA/1.0-380/√3V-120/√3V	1,200	
		100VA/1.0-380V-220V	1,200	
		100VA/1.0-480V-110V	1,200	
		200VA/3.0-220V-110V	1,200	
		200VA/3.0-480V-110V	1,200	
		200VA/3.0-480V-120V	1,200	
		200VA/3.0-480V-220V	1,200	
RP3-1S3	3Φ / 60Hz	100VA/1.0-380Y/220V-110Y/63-Y-Y	3,600	Figure 1 Photo
		3*200VA/3.0-380V-110V-△-△	3,600	
RP-1S5	1Φ60Hz	150VA/1.0-480V-120V	1,440	Figure 1 Photo Dimensions
		200VA/1.0-380V-110V	1,440	
		200VA/1.0-380/√3V-110/√3V	1,440	
		200VA/1.0-380V-120V	1,440	
		200VA/1.0-380/√3V-120/√3V	1,440	
		200VA/1.0-380V-220V	1,440	
		200VA/1.0-400V-100V	1,440	
		300VA/1.0-220V-110V	1,440	
		300VA/3.0-220V-110V	1,440	
		300VA/3.0-230V-115V	1,440	
		300VA/3.0-380V-110V	1,440	
		300VA/3.0-440V-220V	1,440	
		300VA/3.0-460V-115V	1,440	
		300VA/3.0-480V-110V	1,440	
		500VA/3.0-230V-115V	1,440	
		500VA/3.0-380V-220V	1,440	
500VA/3.0-440V-110V	1,440			

RP-1S5	1Φ60Hz	500VA/3.0-460V-110V	1,440	Figure 1 Photo Dimensions
		500VA/3.0-460V-115V	1,440	
		500VA/3.0-480V-110V	1,440	
		500VA/3.0-480V-120V	1,440	
		750VA/3.0-230V-115V	2,400	
		1000VA/3.0-208V-220V	2,400	
		1000VA/3.0-230V-115V	2,400	
		1000VA/3.0-240V-120V	2,400	
		1000VA/3.0-380/√3V-110/√3V	2,400	
		1000VA/3.0-460V-110V	2,400	
		1000VA/3.0-480V-120V	2,400	
RP-1S7	1Φ60Hz	500VA/1.0-380/√3V-110/√3V	3,200	Figure 2 Photo
		2000VA/3.0-480V-120V	3,600	
ET1-1S	1Φ60Hz	380V-110V-IP00- Cast Resin-F Class-Subtractive Polarity	3,600	Figure 2 Photo
S-11	1Φ / 60Hz	1500VA/3.0-P:480/120V-S:220/110V-Terminal covers included-P & S taps	3,600	Figure 3 Photo

Medium-Voltage Potential Transformers

Model	Phases / Frequency	Specifications	Unit Price (NT\$)	Note
EPF-20SI	1Φ / 60Hz	200VA/1.0-24KV-120V	12,000	Figure 4 Photo Dimensions

Low-Voltage Dry-Type Transformers

Model	Phases / Frequency	Specifications	Unit Price (NT\$)	Note
DTH	3Φ / 60Hz	30 kVA 220V-190Y/110V-H Class-△- Y	24,000	Figure 5 Photo Dimensions
		200 kVA 480V±2*2.5%-400Y/231V Class H △- Y (Note: 1. Anti-harmonic 2. Includes round-pointer thermometer 3. Without PT100 terminal)	120,000	

Non-Ventilated Resin-Encapsulated Transformers

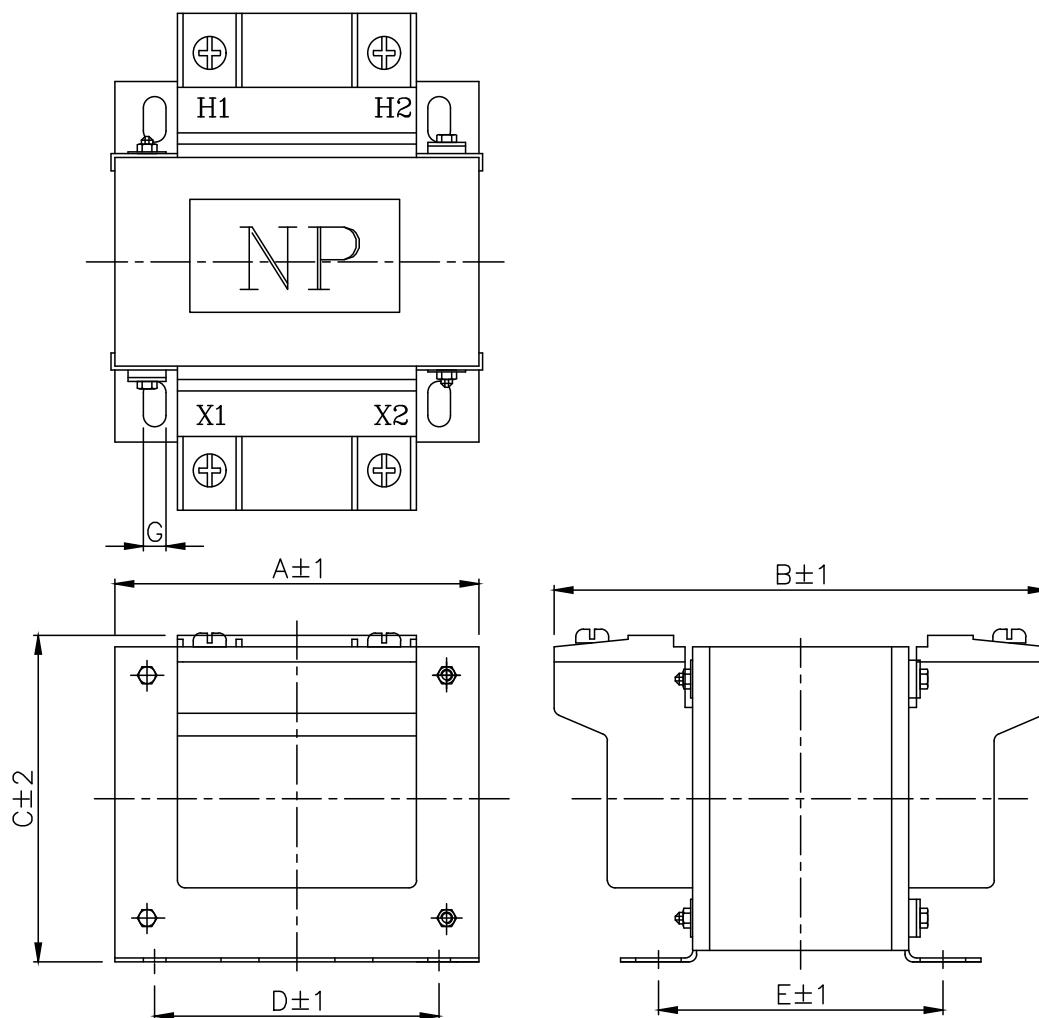
Model	Phases / Frequency	Specifications	Unit Price (NT\$)	Note
+ET	1Φ / 60Hz	2 kVA 220-110V-Subtractive Polarity- Mounting on Floor	6,800	Figure 6 Photo Dimensions
		3 kVA 220V-110V-Isolated-Subtractive Polarity-No. 94	7,200	
		15 kVA 380V-190/110V-(Center Tap)- Mounting on Wall	12,800	
ET	3Φ / 60Hz	3 kVA 380V±2*2.5%-190Y/110V-No. 94- Mounting on Floor-△-Y	8,000	
		5 kVA 380V±2*2.5%-190Y/110V-No. 94- Mounting on Floor-△-Y	9,600	
		5 kVA 380V±2*2.5%-190Y/110V-No. 94- Mounting on Floor-△-Y	9,600	
+ET	3Φ / 60Hz	7.5 kVA 380V±2*2.5%-190Y/110V-No. 94- Mounting on Floor-△-Y	10,400	
		7.5 kVA 380V±2*2.5%-190Y/110V-No. 94- Mounting on Floor-△-Y	10,400	
		10 kVA 380V±2*2.5%-190Y/110V-No. 94- Mounting on Floor-△-Y	11,200	
		10 kVA 380V±2*2.5%-190Y/110V-No. 94- Mounting on Floor-△-Y	11,200	
ET	3Φ / 60Hz	20 kVA 380V-190Y/110V- Horizontal Suspension-△-Y	17,600	
+ET	3Φ / 60Hz	20 kVA 380V±2*2.5%-190Y/110V-No. 94- Mounting on Floor-△-Y	15,200	
		20 kVA 380V±2*2.5%-190Y/110V-No. 94- Mounting on Floor-△-Y	15,200	
		25 kVA 380V±2*2.5%-190Y/110V-No. 94- Mounting on Floor-△-Y	16,800	
		25 kVA 380V±2*2.5%-190Y/110V-No. 94- Mounting on Floor-△-Y	16,800	
		30 kVA 380V±2*2.5%-190Y/110V-No. 94- Mounting on Floor-△-Y	17,600	

Note: "ET" denotes models with copper windings; "+ET" refers to those with aluminum windings.

+ET	3Φ / 60Hz	30 kVA 380V±2*2.5%-190Y/110V-No. 94- Mounting on Floor-△-Y	17,600	Figure 6 Photo Dimensions
		30 kVA Top Opening-380V±2*2.5%-190Y/110V-No. 94- Mounting on Floor-△-Y	17,600	
ET	3Φ / 60Hz	37.5 kVA Top Opening- 380±2*2.5%V-190Y/110V-H Class-Mounting on Floor	36,000	
+ET	3Φ / 60Hz	37.5 kVA Top Opening-380V±2*2.5%-190Y/110V-No. 94- Mounting on Floor-△-Y	33,600	
ET	3Φ / 60Hz	50 kVA Top Opening-380±2*2.5%V-190Y/110V- H Class-Mounting on Floor	48,000	
+ET	3Φ / 60Hz	50 kVA Top Opening-380V±2*2.5%-190Y/110V-No. 94- Mounting on Floor-△-Y	40,000	
ET	3Φ / 60Hz	50 kVA Top Opening-380±2*2.5%V-190Y/110V-No. 94- Mounting on Floor-△- Y K4, Special Outlet Hole 4-ø53	48,000	
ET		100 kVA 380V-190Y/110V-△- Y -Top Opening	96,000	

Note: "ET" denotes models with copper windings; "+ET" refers to those with aluminum windings.

(Unit: mm)



項目	型式	負擔/精度等級	A	B	C	D	E	G	重量(約)
G1	RP-1SN	50VA/1.0;100VA/3.0	99	130	86	75	75	6	3.2kg
G2	RP-1S3	100VA/1.0;200VA/3.0	117	146	100	86	90	7	5.3kg
G3	RP-1S5	200VA/1.0;500VA/3.0;1000VA/3.0	137	156	115	105	95	7	8.6kg
G4	RP-1S7	500VA/1.0;1500VA/3.0	166	167	138	130	112	7	13.64kg

PHOTO

MODEL

Figure 1

RP-1S Series



[Photo-1](#) [Unit Price-1](#)

[Photo-2](#) [Unit Price-2](#)

(Unit: mm)

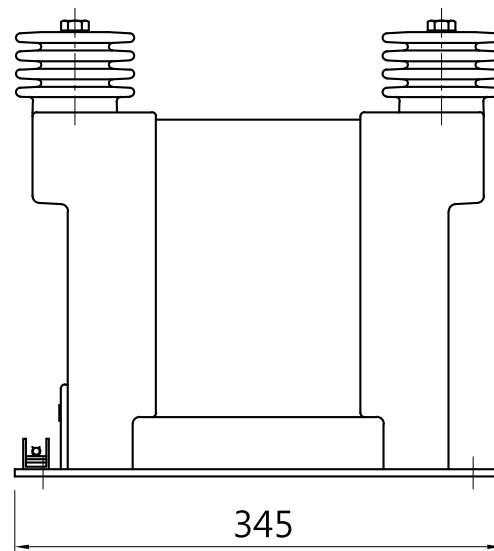
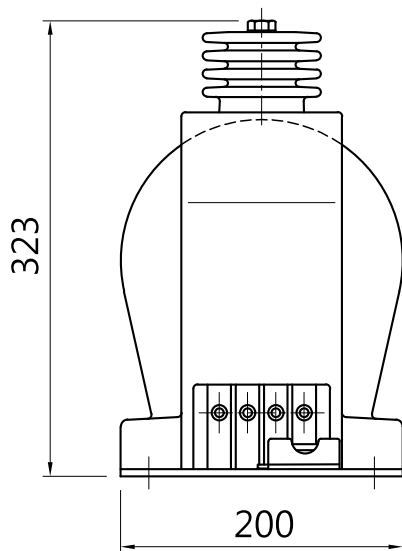
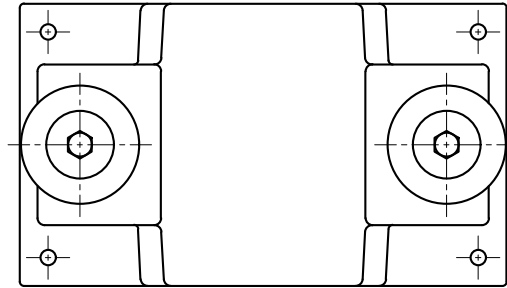

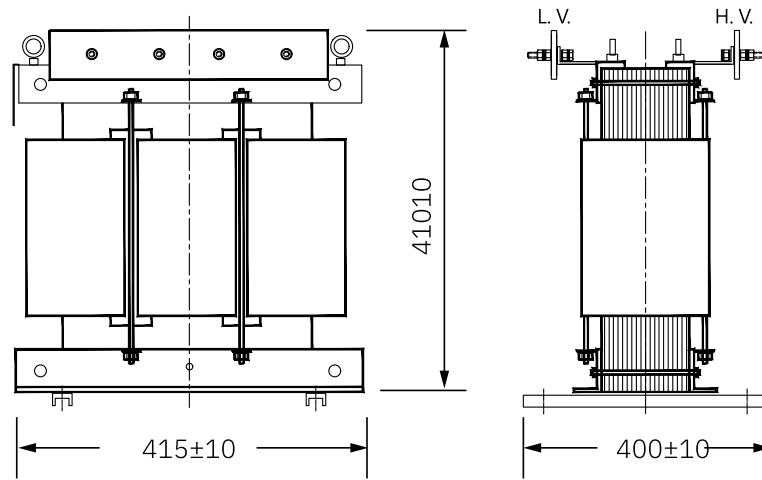


PHOTO	MODEL	
Figure 4	EPF-20SI	

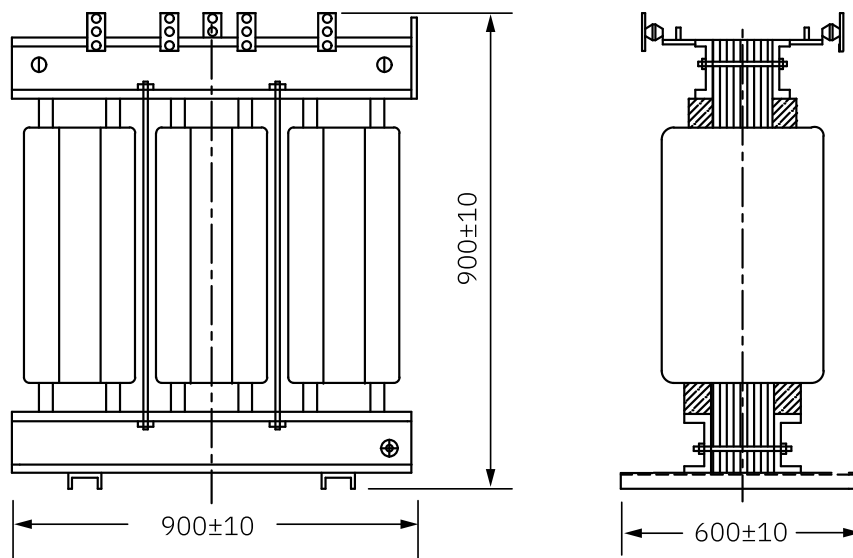
[Photo](#)

[Unit Price](#)


(Unit: mm)



DTH 3φ 60HZ 30kVA



DTH 3φ 60HZ 200kVA

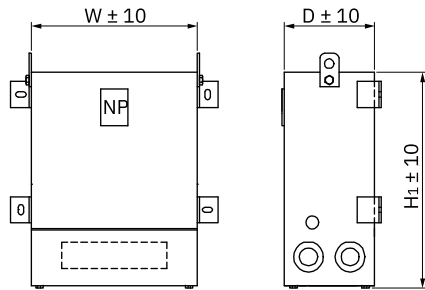
PHOTO	MODEL	
Figure 5	DTH Series	

[Photo](#)

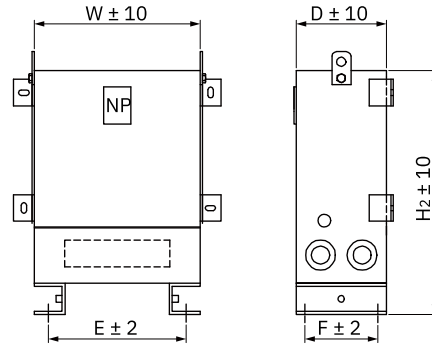
[Unit Price](#)

(Unit: mm)

Drawings and Selection Tables



(Horizontal Suspension)



(Mounting on Floor/Wall)

■ Regular Type (Type ET & +ET)


Explanation:

“C” denotes models with copper windings (Type ET);

“A” refers to those with aluminum windings (Type +ET).

Capacity (kVA)	W (mm)		D (mm)		H ₁ (mm)		H ₂ (mm)		E (mm)		F (mm)		Sound Level (dB)		Approx. Weight (kg)	
	C	A	C	A	C	A	C	A	C	A	C	A	C	A	C	A
3	240	240	150	150	395	395	350	350	190	190	100	100	40	40	45	45
5	290	290	165	165	425	425	380	380	240	240	115	115			50	50
7.5	290	360	165	165	455	520	410	475	240	310	115	115			50	70
10	330	360	175	180	495	555	450	510	280	310	125	130			80	85
15	330	420	200	215	525	580	480	535	280	370	150	165			95	110
20	375	435	205	215	615	660	570	615	325	385	155	165			120	140
25	420	435	230	225	615	675	570	630	370	385	180	175			140	155
30	420	435	250	230	635	700	590	655	370	385	200	180	160	165		
37.5	480	520	250	250	750	750	-	-	430	470	200	200	45	45	265	240
50	510	600	260	300	800	750	-	-	460	550	210	250			325	325
75	560	700	290	340	850	850	-	-	510	650	240	290	50	50	425	450

Note: The data above are given as examples only. Please contact us with your special requests and for final specifications.

PHOTO	MODEL	
Figure 6	ET Series	

[Photo-1](#) [Unit Price-1](#)

[Photo-2](#) [Unit Price-2](#)