

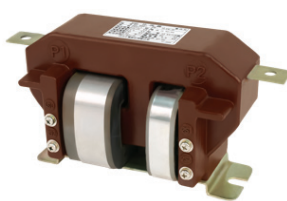
# Coil Molded Current Transformers

## EW Series

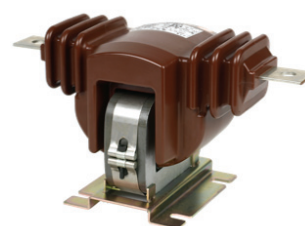
For the main panel or the motor control panel of a power system, **EW Series** coil molded current transformers typically work in conjunction with measuring or monitoring instruments. Single-core and two-core options are available. **EW-3S** is made with a laminated core, fixed by two metal frames. **EW-3C** and **EW-10SH** are cut-core models, and each is attached to a metal base. All three varieties are insulated with Araldite® epoxy resin. Lightweight, compact, and easy to install, these current transformers are characterized by excellent electrical properties.



EW-3S



EW-3C



EW-10SH

## Specifications

- Standards: IEC or IEEE\*
- Indoor application
- Coil molded
- High-grade silicon steel core(s)
- Frequency: 50/60 Hz

## Selection Table

Model	System Voltage	Primary Current	Secondary Current		Burden / Accuracy	Ith (Max.)	AC/BIL (kV)	Approx. Weight (kg)	Num. Of Cores
			Core 1	Core 2					
EW-3S	3.6 kV	10~400A	5A/1A	-	40VA/1.0	16 kA/1S	10/40	5	1
EW-3C	3.6 kV	10~300A	5A/1A	5A/1A	15VA/5P10 + 25VA/0.5 or 15VA/5P10 + 30VA/1.0			9	2
EW-10SH	12 kV	5~400A	5A/1A	-	40VA/1.0		28/75	7	1

\* Other standards and specifications available